



Area di applicazione

- Industria alimentare
- Industria farmaceutica
- Biotecnologia

Caratteristiche

- Custodia di alta qualità NS 63/100 con design igienico secondo la raccomandazione EHEDG
- Grado di protezione IP 65
- Classe di precisione 1.6 / 1.0 secondo EN 837-1
- Membrana montata a filo
- Piccolo errore di temperatura mediante elemento di misura a volume ridotto

Opzioni e caratteristiche aggiuntive

- Neck ■ Tubo del collo e guarnizione del diaframma in un unico pezzo, custodia opzionalmente completa, compresi tubo del collo e guarnizione del diaframma, in versione igienica (Ra <0,76 µm secondo EHEDG Doc. 8 / ASME BPE SF3)
- Omologazioni / Certificati
 - Certificato materiale per EN 10204
 - Certificato calibrazione per EN 10204
- Smorzamento del movimento
- Scala di precisione
 - Design autoclavabile
 - Parti bagnate e superfici dell'involucro elettrolucidate

Applicazione

Il manometro clamp BH8 è stato progettato per soddisfare i più elevati requisiti di igiene nei settori alimentare, farmaceutico e delle biotecnologie. Può essere fornito con un'ampia varietà di connessioni al processo igieniche, tra cui clamp e triclamp. Il suo design igienico della custodia è conforme alle raccomandazioni EHEDG, garantendo così un'ottima capacità di pulizia, ad es. in autoclavi. Non è necessario rimuovere le parti della custodia (ad es. La valvola di sfiato).

Dati tecnici

Constructional design / case

Design:	High quality case of stainless as per EHEDG recommendation
Material:	<u>Multi-piece design:</u> Stainless steel mat.-no. 1.4404 (316L) <u>One-piece design:</u> Stainless steel mat.-no. 1.4435 (316L) delta ferrite content < 3%
Nominal size:	NS 63 or NS 100
Degree of protection per EN 60529:	IP 65
Atmospheric pressure compensation:	Via vent valve in the window Material: PVDF, FDA compliant
Material case gasket:	EPDM, FDA compliant
Type plate:	Adhesive label Option: laser marking, Ra < 2.5 µm in the area around the laser marking. Option: visible inside the case.
Window:	Macrolon (polycarbonate) Option: PPSU in case of autoclavable design
Measuring element:	Bourdon tube, circular
Process-connection:	welded multi-piece (neck tube/diaphragm seal) one-piece (neck tube/diaphragm seal)
System filling:	Synthetic oil FD1, free of silicone, FDA compliant
Movement:	Material stainless steel Option: with integrated damping system
Scale:	Pure aluminium, white with black inscription Option: precision scale Option: red marking, Special scale upon request
Pointer:	Pure aluminium, black

Process connection

See order details.

Material wetted parts

Diaphragm and body:	Stainless steel 316L, see product group D5 Option: Stainless steel mat.-no. 1.4435 (316L) Delta ferrite content < 3 %
---------------------	---

Nominal range

See order details, further ranges upon request.

Overload-protection:	1.3 times Option: 2 times
----------------------	------------------------------

Accuracy

Accuracy class:	per EN 837-1:
	NS 63: class 1.6
	NS 100: class 1.0
	Option:
	NS 63: class 1.0
Temperature-influence:	Max. ± 0.4% / 10K of measuring span per EN 837-1
Process-temperature-influence:	depending on active diaphragm diameter
	dM 22,6...24 mm ≤ 25 mbar / 10 K
	dM 27...30 mm ≤ 20 mbar / 10 K
	dM 34...36 mm ≤ 8 mbar / 10 K
	dM 40...46 mm ≤ 5 mbar / 10 K
	dM 51...58 mm ≤ 2 mbar / 10 K

A detailed calculation of accuracy can be submitted upon request.

Hygienic design

The wetted surfaces made of stainless steel are executed according to EHEDG Doc.8 and ASME BPE SF3
We guarantee the following surface roughness values when

selecting the hygienic design:

Diaphragm foil:	Ra ≤ 0.38 µm
Laser welds:	Ra ≤ 0.76 µm
Turned parts:	Ra ≤ 0.76 µm

Optionally in the one-piece design all surfaces, not only the wetted parts, are available in the roughness Ra ≤ 0,76 µm.

Temperature ranges

Ambient:	-10...50 °C
Media:	-10...140 °C
Storage:	-20...60 °C

Options:

- Autoclavable at 121 °C for 30 minutes
- Autoclavable at 140 °C for 1 hour

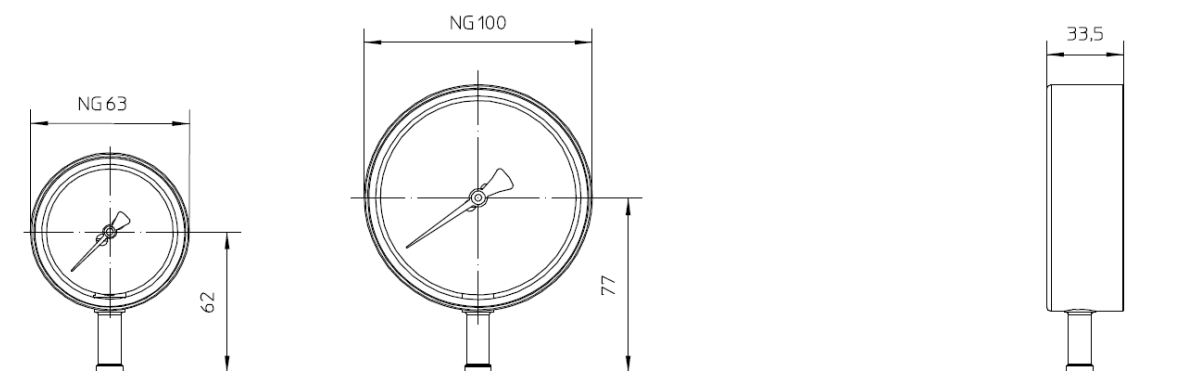
Tests and certificates

- EAC declaration (upon request)

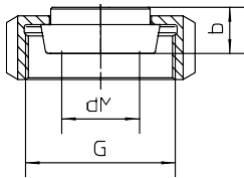
Information on other models see order details or upon request.

Dimensioni

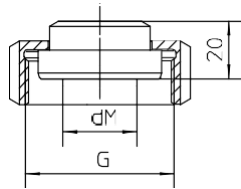
Multi-piece design / case



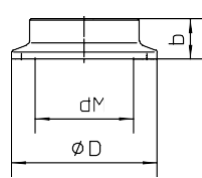
Process connection



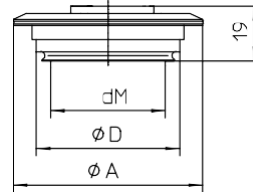
sanitary connection
with coupling nut
per DIN 11851



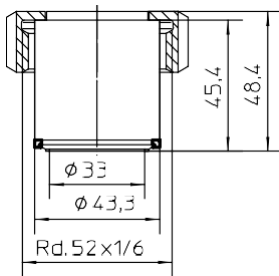
aseptic screw joint
collar connection
with union nut per
DIN 11864-1 type A



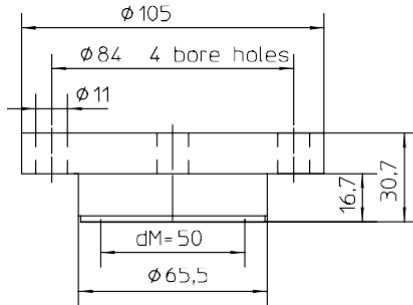
clamp connection
per DIN 32676/ISO 2852



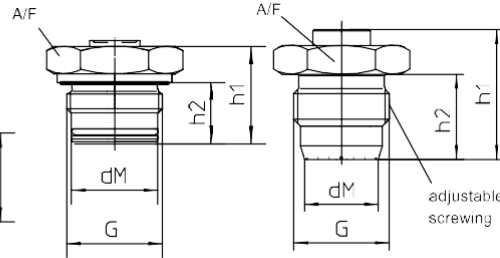
VARIVENT[®] connection for
VARINLINE[®] case



HYGENIC-Tubus *
ø43.3 with screwing
DN25/PN40



DRD-connection DN50 PN40 *



Screw-in thread *
with o-ring-gasket
and additionally gasket
per DIN EN ISO 1179-2
model E (DIN 3852)

HYGENIC-screw-in thread *
no gasket
tightening torque
20 Nm, max. nominal pressure 10 bar
50 Nm, max. nominal pressure 50 bar

* weld-in adapter
see data-sheet D6-037

Sanitary pipe connection with union nut per DIN 11851

DN	PN	dM	b	G
25	40	27	16	Rd.52x1/6"
32	40	34	16	Rd.58x1/6"
40	40	40	16	Rd.65x1/6"
50	25	51	17	Rd.78x1/6"

Aseptic screw joint collar connection with union nut per DIN 11864-1 type A

DN	PN	dM	G
25	40	24	Rd.52x1/6"
32	40	30	Rd.58x1/6"
40	40	34	Rd.65x1/6"
50	25	48	Rd.78x1/6"

Clamp connection per DIN 32676 model A (metric) for pipes per EN 10357 (DIN 11850)

DN	PN	dM	b	D
25	25	22.6	14	50.5
32	25	27	12	50.5
40	25	34	12	50.5
50	16	46	14	64

Clamp connection per DIN 32676 model B (OD, ISO) for pipes per DIN EN ISO 1127

DN	PN	dM	b	D
26.9	25	22.6	14	50.5
33.7	25	27	12	50.5
42.4	25	34	12	64
48.3	16	40	14	64

Clamp connection per DIN 32676 model C (Tri-Clamp) for pipes per ASME BPE

DN	PN	dM	b	D
3/4"	25	15.5	15	25
1"	25	22.6	14	50.5
1 1/2"	25	34	12	50.5
2"	16	46	14	64

Clamp connection per ISO 2852 for pipes per ISO 2037

DN	PN	dM	b	D
25	16	22.6	14	50.5
38	16	34	12	50.5
51	16	46	14	64

VARIVENT[®] connection for VARINLINE[®] access unit

Connection	PN	dM	A	D
Form F	25	40	66	50
Form N	25	58	84	68

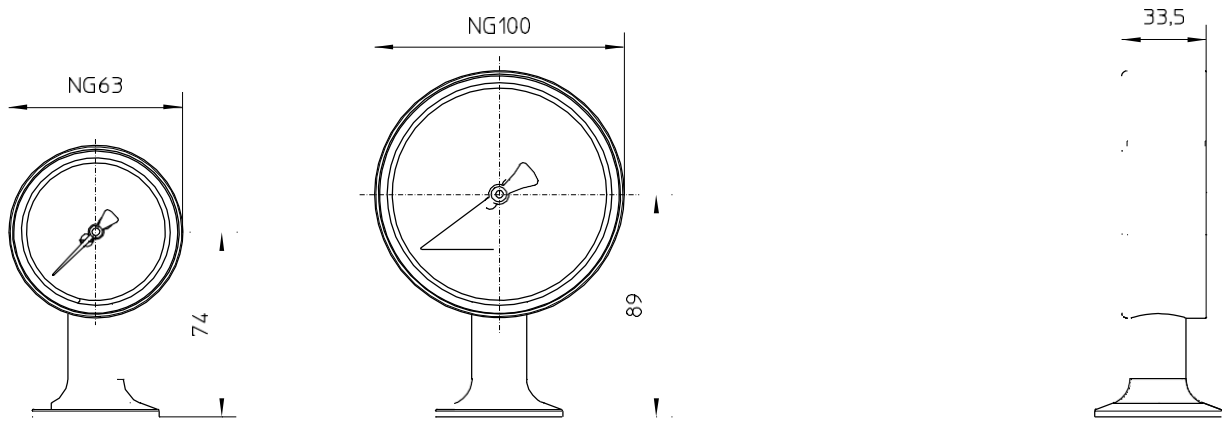
HYGIENIC screw-in thread, gasket without elastomer

G	PN (bar)	dM	h1	h2	SW
G1 A	50	24	45	28.5	36

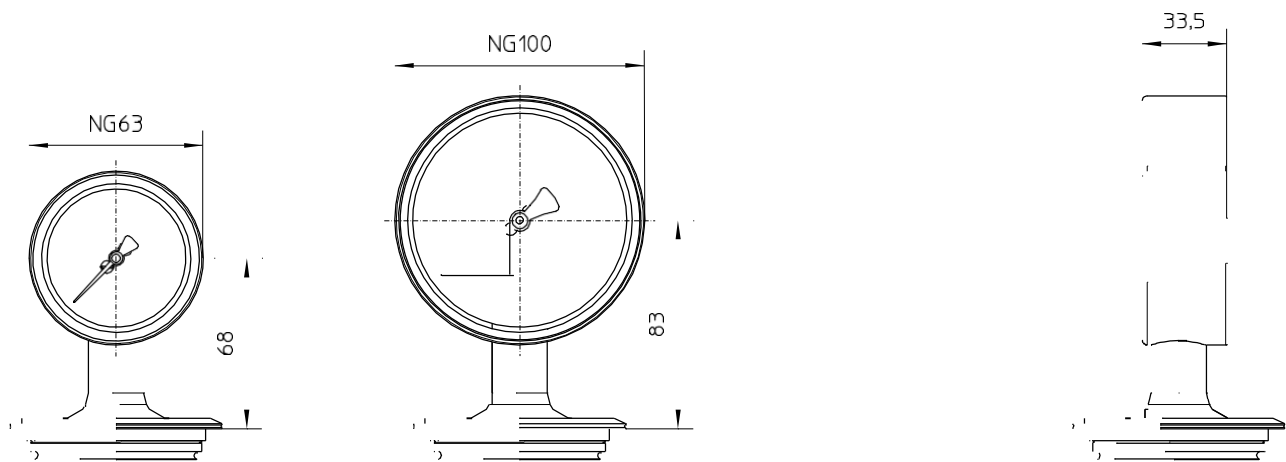
Screw-in thread with O ring gasket

G	PN (bar)	dM	h1	h2	SW
G1 A	50	24	33	20,5	41

One-piece design



Process connection 1 1/2" Clamp per DIN 32676, type C



Process connection VARIVENT® connection, Form N (D = 68)

Further variants in one-piece design upon request.

Order details

Bourdon tube pressure gauge NS 63/100, hygienic design for diaphragm seal operation, Type series BH8...

Order details BH8...				
BH8100	case design NS 63	degree of protection IP 65 without case filling		
BH8200	case design NS 100			
A53	nominal range [bar]	0...1		
A54		0...1.6		
A55		0...2.5		
A56		0...4		
A57		0...6		
A58		0...10		
A59		0...16		
A60		0...25		
A86		-1...0		
A87		-1...0.6		
A88		-1...1.5		
A89		-1...3		
A90		-1...5		
A91		-1...9		
A92	-1...15			
Q23	accuracy	class 1.6 for NS 63		
Q22		class 1.0 for NS 63 / NS 100		
J3	neck tube	multi-piece design (neck-tube and diaphragm seal)		
J4		one-piece design (neck tube and diaphragm seal) ¹		
K102	process connection	sanitary pipe connection with union nut per DIN 11851	DN 25	
K103			DN 32	
K104			DN 40	
K105			DN 50	
K162		aseptic screw joint collar connection with union nut per DIN 11864-1 type A	DN 25	
K163			DN 32	
K165			DN 40	
K166			DN 50	
K124		clamp connection per ISO 2852 for pipes per ISO 2037	DN 25 (1")	
K126			DN 38 (1 1/2")	
K127			DN 51 (2")	
K144		clamp connection per DIN 32676, model A (metric) for pipes per EN 10357 (DIN 11850)	DN 25	
K146			DN 32	
K147			DN 40	
K148			DN 50	
K213		clamp connection per DIN 32676, model B (OD, ISO) for pipes per DIN EN ISO 1127	DN 26,9	
K214			DN 33,7	
K215			DN 42,4	
K216			DN 48,3	
K134		clamp connection per DIN 32676, model C (Tri-Clamp) for pipes per ASME BPE	DN 3/4" ³	
K136			DN 1"	
K137			DN 1 1/2"	
K138			DN 2"	
K152		VARIVENT®-connection	Form F (D=50) for VARINLINE® access unit	
K153			Form N (D=68) for VARINLINE® access unit	
K172		HYGIENIC tubus	Ø 43.3 mm with screwing DN 25/PN 40	
K185		DRD connection	nominal width DN 50 / nominal pressure PN 40	
K195		screw-in thread	G 1 A with O-ring seal	
K80			G 1 A with hygienic process connection (elastomer-free)	
G1		wetted parts	1.4404/1.4435 (316L)	
G7.9			1.4435 (316L), delta ferrite content < 3% ²	

H1	overload protection	1.3 times
H2		2 times
P1	media temperature	-10...140 °C
P9		variant as in writing
R11	material window	Macrolon (polycarbonate)
R15		PPSU

Additional features (to be indicated if required)		
HY	surface roughness (wetted parts)	hygienic version as per EHEDG Doc.8 and ASME BPE SF3
HYG	surface roughness (case, neck tube, diaphragm seal)	$Ra \leq 0.76 \mu m^2$
T2	marking	on scale (red marked)
W1020	material certificate	per EN 10204-3.1, wetted parts
W1204	calibration certificate	per EN 10204-3.1, 3 measuring points
W1201		per EN 10204-3.1, 5 measuring points
W4035	electropolishing	wetted parts
W4036		wetted parts and case surface
W4102	damping of movement	with integrated damping system
W4122	type plate	laser marked
W4126	autoclavable at 121 °C for 30 min	
W4128	autoclavable at 140 °C for 1 hour	
W4127	micro adjustment	

Order code (example): BH8200 - A56 - J3 - K126 - G1 - H1 - P1 - R11 - ...

¹ only for VARIVENT® connection, Form N (D= 68) and 1 1/2" clamp per DIN 32676, model C; further variants upon request

² only for one-piece design (J4)

³ for a function calculation and optimum system design it is necessary to specify the operation temperature